



U17 CIRCUIT

INVITATION

to the international badminton tournament LI-NING Ljubljana Cup U17 2024

(Part of the Badminton Europe U17 Circuit – U17 International Challenge)

LJUBLJANA, SLOVENIA, 29th November – 1st DECEMBER 2024

[Ljubljana Li-Ning Youth Cup](#)

(for categories U11, U13 and U15 age groups will be played in the same hall at the same time)

ORGANIZED BY:

Badminton Association of Slovenia
Badminton klub Ljubljana,
address: Dolgi most 6c, 1000 Ljubljana, Slovenia
Email: info@badminton-ljubljana.si
Phone: +386 51 257 537

TOURNAMENT WEBSITE:

<https://www.li-ning.si/li-ning-ljubljana-cup-u17--youth-2024/>

TOURNAMENT DIRECTOR:

Matic Ivančič,
mobile phone: +386 51 257 537,
email: matic@li-ning.si

VENUE:

Sport hall Dolgi most, Dolgi most 6c, 1000 Ljubljana, Slovenia

DATE:

Friday, November 29th - Sunday, December 1st, 2024

AGE GROUP:

U17 - born **2008** or later

REFEREE:

Jožef Kuprivec-Dodo
Phone number: +386 41 206 233
Email: jozef.kuprivec@gmail.com

SCHEDULE:

Friday: 09:00 - 21:00
Saturday: 09:00 - 21:00
Sunday: 09:00 semifinals; 12:00 finals



5 courts/3 days	Round 64	Round 32	Round 16	QF	SF	Final
MS - 64	32	16	8	4	2	1
WS - 64	32	16	8	4	2	1
MD - 32	-	16	8	4	2	1
WD - 32	-	16	8	4	2	1
XD - 48	16	16	8	4	2	1
Total	112		108		15	

MANAGERS MEETING: will be set up on Thursday, November 28th, 2024 at 20.00 CET in Sport Hall Dolgi most.

EVENTS: All five events will be played. Each competitor can enter in one single event, one men's doubles or women's doubles event and one mixed doubles event.

The number of entries that can be accepted in each event are:

MS - 64, WS - 64, MD - 32, WD - 32, XD - 48.

Regulation 2.3 of the BEC U17 Circuit Regulations about the minimum amount of entries:

» In accordance with regulation § 9.2 and § 9.3 in BWF Statutes, Section 5.3.3.2: World Junior Ranking System, an event must contain at least 8 (eight) competitors in the first published version of the main draw. If the required number of competitors is not met in the first published version of the main draw, this particular event shall not count towards any ranking.

In accordance with regulation § 9.4 in BWF Statutes, Section 5.3.3.2: World Junior Ranking System, an event must contain at least 1 (one) entry from a Member other than the hosting Member in the first published version of the main draw. If an event does not contain at least 1 (one) entry from a Member other than the hosting Member in the first published version of the main draw, this particular event shall not count towards any ranking.

Badminton Europe is not liable for any costs incurred by third persons (players, coaches, umpires, team managers etc.) because of an event not having enough competitors to count for the rankings.«

SYSTEM: singles and doubles, simple KO

ENTRIES: All entries must be made by using the BWF Online Entry System:
<https://bwf.tournamentsoftware.com/tournament/f3132f03-9987-4e2c-99dc-5d2586a7d1c8>
Entries must be submitted no later than **Tuesday, October 29th, 2024 at 04:59 PM (GMT +01:00)**



-
- DRAW:** Seeding and draw will be carried out by Badminton Europe on **19th November 2024**
- ENTRY FEE:** **Singles** - 35 EUR per player
Doubles - 25 EUR per player per event
- Regulation 12.1 and 12.2 of the BEC U17 Circuit Regulations about the entry fee payments:
»12.1 *The Member that enters a player/pair into a BEC U17 Circuit tournament is responsible for paying the entry fees for that player/pair. The entry fees become due if a player is entered and has not been withdrawn when the entry deadline passes. It is recommended that the entry fees are paid by bank transfer, but the organisers can accept cash payments at tournaments.*
12.2 *The entry fees will not be refunded in the case of a withdrawal. For all the withdrawn players the organisers can invoice the entry fee to the relevant Member.* «
- PAYMENTS:** Entry fees are payable in cash at the info desk in the sport hall during the first competition day. If you want to get an invoice and transfer money to an organizer's bank account, please contact the organizer.
You have to pay accommodation directly to the hotel in cash or card at the reception of the hotel.
- SHUTTLES:** LI-NING G700
- COURTS:** 5 courts
- PRIZES:** Cups & medals & practical prizes for the first three in each event.
- MEDICAL SERVICE:** A doctor and physiotherapist in the sport hall.
- LOCAL TRANSPORT:** from the airport Ljubljana or main bus/train station Ljubljana to the official accommodation amenities - **10 EUR** per person (both ways) – please send you flight details at least one week before the start of the tournament, so we can arrange your transport.
- Transport schedules from hotels to sport hall and back will be published on official web page and visible in hotel lobbies before start of the tournament. Note that transport between the hotels and the hall will be available only to players staying at the official hotels.
- VISA:** If you need Visa for Slovenia please ask the Badminton Association of



Slovenia for the official Invitation letter. It is advised to arrange the VISA in time. Contact: info@badminton-zveza.si

INSURANCE:

The organizer declines responsibility and covering of costs for possible injuries or other damages. It is up to each participant to insure himself. The organizing committee cannot be held responsible for accidents and lost or stolen items.

NOTE:

All three days there will be organized lunch in the hall. Coupons for lunch can be bought at the info desk before 10:00 each day. More information about price and menu will be published on official webpage closer to the start of the tournament.

ACCOMMODATION:

Please contact hotels directly. If there would arise any problems, please let us know at matic@li-ning.si.

1. M HOTEL LJUBLJANA (www.m-hotel.si)

(29.11. – 2.12.2024)

Reservations to be sent to the following e-mail address: anja.novak@m-hotel.si

First and last name:	
Room type and number of persons:	
Arrival date:	
Departure date:	

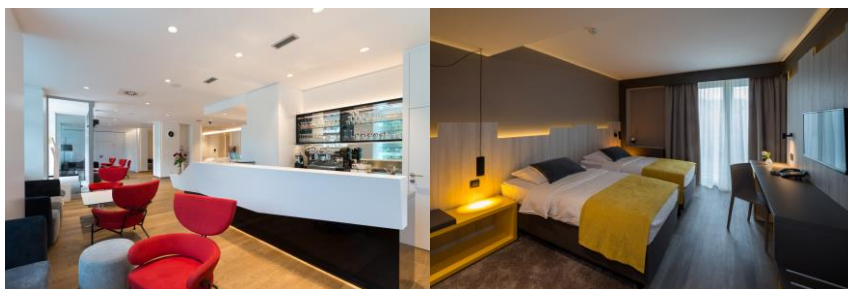
Special rates:

Single Comfort room with buffet breakfast:	78 EUR / night.
Double / twin room with buffet breakfast:	44 EUR / person / night
Triple room with buffet breakfast:	36 EUR / person / night
Tourist tax:	3,13 EUR / person / night.

Payments: Payment to be made directly at the hotel.

Limited no. of the rooms are reserved.

Optional: supplement for buffet lunch or dinner: 22 EUR



Address: Derčeva ulica 4, 1000 Ljubljana



2. ROKO HOTEL LJUBLJANA (www.roko-hotel.si)

(29.11.-1.12.)

Double room: 65 EUR / night

Triple room: 95 EUR / night

Tourist tax: 1,15 EUR / person / night

Optional breakfast: 10 EUR

Payments: Payment to be made directly at the hotel.

Address: Podpeška cesta 14, 1351 Brezovica pri Ljubljani

DOPING CONTROL

Doping control in badminton, in accordance with BWF Anti-Doping Regulations, is conducted out-of-competition and in-competition with the collection of urine and/or blood samples.

Athletes are responsible for any substance found in their body. Before an athlete takes any medication, they should check with their doctor, and if necessary, get a Therapeutic Use Exemption (TUE).

For more information about anti-doping, please visit the BWF website:

<https://corporate.bwfbadminton.com/integrity/anti-doping-overview/>

BADMINTON INTEGRITY

Section 2.4 of the BWF Statutes (Code on The Prevention of The Manipulation of Competitions) relates to anti-corruption and anti-match manipulation, and this code applies to all participants at this tournament.

To protect the integrity of BWF sanctioned tournaments, participants are not allowed to bet in any way on badminton matches, shall respect the principle of fair play, and shall not attempt to influence the course or result of a game or match.

Every person has an obligation to report to the BWF any approaches by anyone to gather inside information or to change the outcome of a match(es).

For more information, please refer to BWF's website:

<https://corporate.bwfbadminton.com/integrity/anti-match-fixing-overview/>

COMPLIANCE WITH GENERAL COMPETITION REGULATIONS CLAUSE 7.9

GCR 7.9: *"In making or authorising entries, the Member concerned is reconfirming its acceptance, and acceptance by the Players being entered, of the BWF's regulations and Disciplinary processes."*